



FLOAT OPERATED LEVEL CONTROLLER

GEN II BACK MOUNT

APPLICATIONS:

Liquid level controller for oil and gas separators, water knock-outs, gas scrubbers and accumulators.

Liquid interface control in fluids of 0.20 minimum differential specific gravities with the standard displacer. Other displacers are available to control liquid interface to 0.10 minimum specific gravities.

Operates any diaphragm motor valve requiring not more than 30 psig diaphragm pressure. See sections E1, E2, E3, and E4 for diaphragm operated motor valves.

FEATURES:

- Compact design
- Snap or throttle control in one pilot
- Intermittent bleed pilot (Preferred EPA Natural Gas Star BMP)
- Bleed Rate (@ 30 psi - 0.4 scfd snap; 0.6 scfd throttle)
- Conditional NACE MR0175 Wetted Parts
- Low Temp Process Seal (Std.) (-50°F to 300°F)
- Powder coated enclosure
- Vibration tough
- No vent gas in Enclosure
- PVC Displacer (Std.) (4000 psi, 175°F);
- 316 SS Displacer (1500 psi, 350°F)
- 40 micron supply gas filter
- 1/4" NPT vented pilot
- Adjustment knob snap range (Patent Pending)
- Simple pilot removal

SUPPLY PRESSURE:

5 to 30 psig

OPERATING PRESSURE:

0 to 4000 psig

OPERATION:

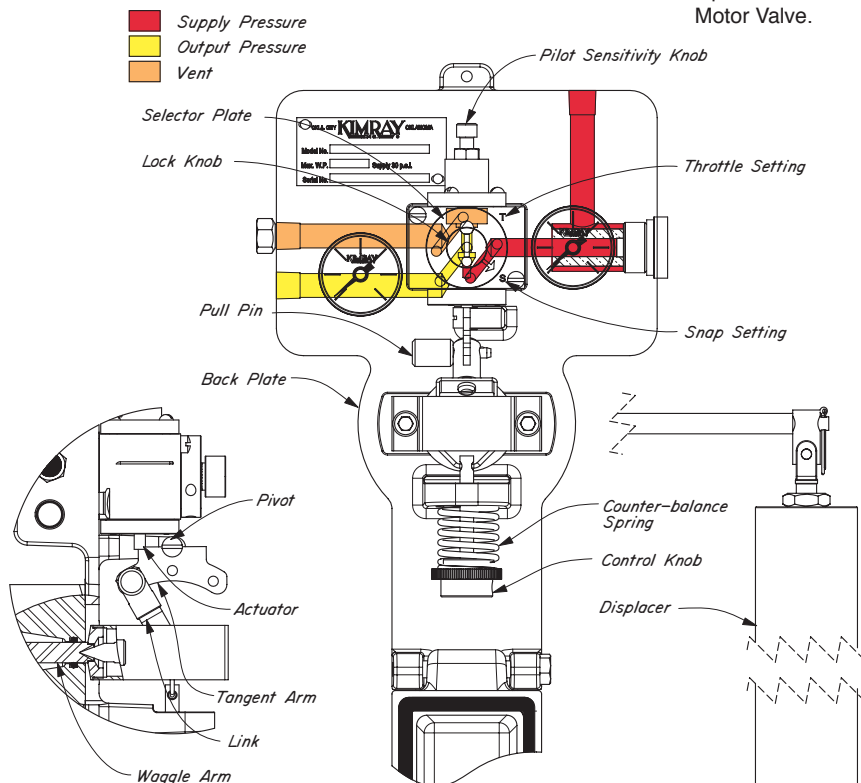
The GEN II Back Mount Liquid Level Controller consists of a DISPLACER for monitoring the changing liquid level, a SPRING for counterbalancing the weight of the DISPLACER, a WAGGLE ARM to transmit DISPLACER movement, a BACK PLATE upon which the controller mechanism is mounted, a 30 psig PILOT, a LINK and TANGENT ARM for setting the pilot sensitivity and direct/indirect action of the controller.

The color cross section of the pilot is shown identifying the supply, output and vent connections. In SNAP SERVICE the SELECTOR PLATE is position to the "S". To operate a Pressure Opening Motor Valve, the PULL PIN is place in the outer most hole of the TANGENT ARM left of the PIVOT. As the vessel liquid rises to partially submerge the DISPLACER. The displaced volume of liquid causes the counterbalance spring to exert a downward force at the end of the WAGGLE ARM HOUSING. The resulting downward movement of the LINK moves the TANGENT ARM downward from the ACTUATOR of the PILOT. The generated force of the DISPLACER continues until it activates and SNAPS the PILOT on. YELLOW OUTPUT pressure opens the Pressure Opening Motor Valve allowing the vessel liquid to drain.

As the vessel liquid lowers, the DISPLACER compresses the COUNTERBALANCE SPRING. The WAGGLE ARM transmits the action through the linkage to the ACTUATOR on the PILOT. The force on the ACTUATOR of the PILOT continues to increase until the PILOT SNAPS off. The YELLOW OUTPUT pressure is vented through the PILOT allowing the Motor Valve to close.

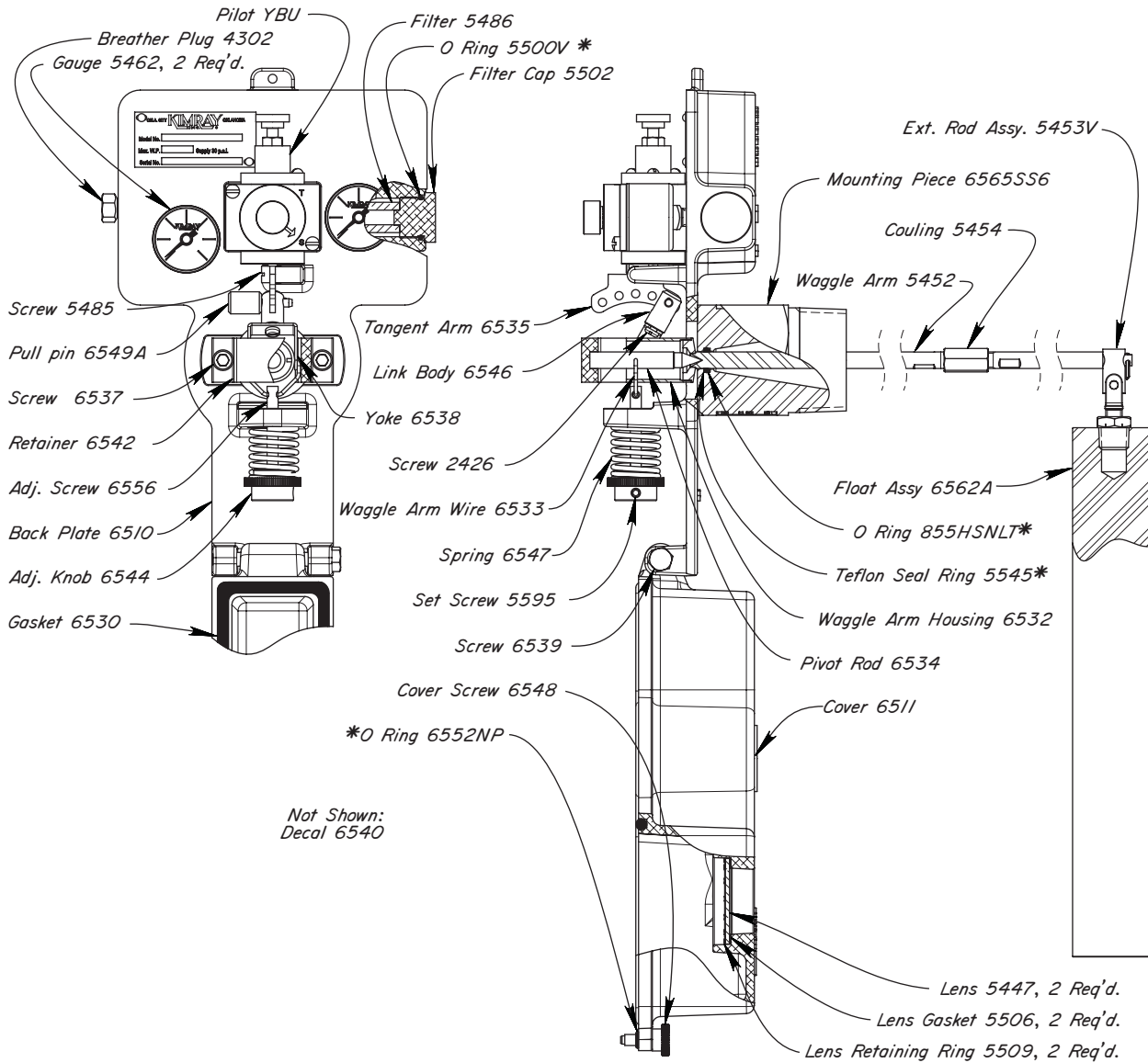
The PILOT SENSITIVITY KNOB can be turned to increase or decrease the SNAP RANGE from 4" to 9" in water. Turning the PILOT SENSITIVITY KNOB clockwise will increase the SNAP RANGE. The PILOT SENSITIVITY KNOB is not functional in the THROTTLE mode.

For THROTTLE mode the LOCK KNOB is loosened and the SELECTOR PLATE is moved from the "S" position to the "T" position. The PULL PIN is placed right of the PIVOT for a Pressure Open Motor Valve and left of the PIVOT for a Pressure Close Motor Valve.



FLOAT OPERATED LEVEL CONTROLLER

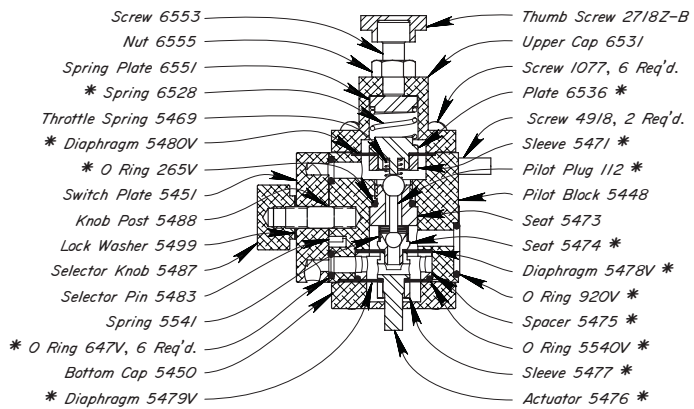
GEN II BACK MOUNT LCC, SS6 STEEL BODY



PILOTS AVAILABLE:

CAT. NO.	BODY TYPE	PILOT	MAX W.P.	REPAIR KIT
CMM	2" NPT	2" GEN II LLC	4000	RMG

YBU PILOT

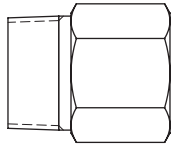


*These are recommended spare parts and are stocked as repair kits.

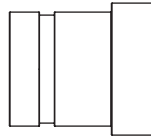


FLOAT OPERATED LEVEL CONTROLLER
GEN II BACK MOUNT BODIES AVAILABLE

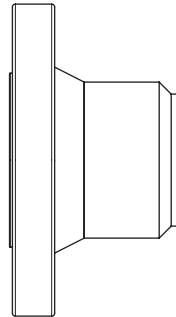
2" NPT (STD)



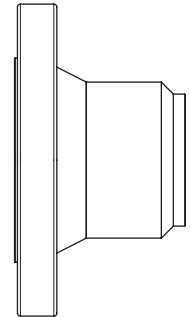
GROOVED



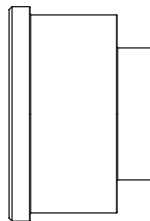
RF FLANGED



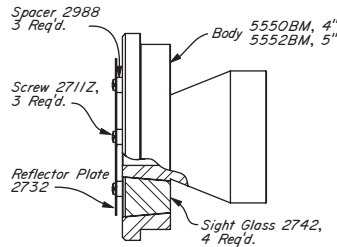
RTJ FLANGED



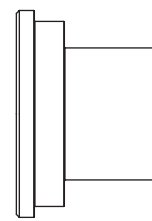
HAMMER UNION



**HAMMER UNION
(w/Sight Glass)**



**HAMMER UNION
(w/o Sight Glass)**



ADAPTER



PART NO.	BODY	MAX. W.P. @ 100° F
6559	2" NPT GEN II	4000
6559SS6	2" NPT GEN II SS6	4000
5548	2" GRV. GEN II	2000
5562BM	2" 150 RF GEN II	285
5563BM	2" 300 RF GEN II	740
5564BM	2" 600 RF GEN II	1480
5565BM	2" 900 RF GEN II	2220
5566BM	2" 150 RTJ GEN II	285
5567BM	2" 300 RTJ GEN II	740
5568BM	2" 600 RTJ GEN II	1480
5569BM	2" 1500 RTJ GEN II	3705
5570BM	3" 150 RF GEN II	285
5555BM	3" 300 RF GEN II	740
5571BM	3" 600 RF GEN II	1480
5572BM	3" 900 RF GEN II	2220
6414BM	3" 1500 RF GEN II	3705

PART NO.	BODY	MAX. W.P. @ 100° F
5573BM	3" 600 RTJ GEN II	1480
5574BM	3" 900 RTJ GEN II	2220
5558BM	3" H.U. w/o SG GEN II UN	3000
5575BM	4" 150 RF GEN II	285
5576BM	4" 300 RF GEN II	740
5577BM	4" 600 RF GEN II	1480
5578BM	4" 600 RTJ GEN II	1480
5579BM	4" 1500 RF GEN II	3750
5550ABM	4" H.U. w/SG + 2901 ACME NUT	1000
5550ABM	4" H.U. w/SG + 2734 UN NUT	1000
5551BM	4" H.U. w/o SG + 2901 ACME NUT	1500
5551BM	4" H.U. w/o SG + 2734 UN NUT	1500
2174	4" GRV. X 2" NPT ADAPTER	2000
5549ABM	5" H.U. w/SG GEN II UN	1000
5552BM	5" H.U. w/o SG GEN II UN	1500
5580BM	6" 1500 RF GEN II	3750



FLOAT OPERATED LEVEL CONTROLLER

GEN II BACK MOUNT DIMENSIONS

