







**APPLICATIONS:**

As an adjustable, self-resetting, pressure limiting device to protect instrumentation from over pressurization and subsequent damage.

Designed to protect pilots on high pressure regulators. Blocks the sense line or supply pressure to a device when it exceeds the adjustable limit of 300 psig. Reopens when inlet pressure drops below the limit.

**NOTE:**

- This device is not to be installed as a:
  - Instrument gas regulator,
  - Pressure reducing regulator.

**CONNECTIONS:**

Inlet and Outlet - 1/4" NPT

**DESIGN PRESSURE:**


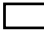
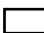
1000 psig. Max.

**OUTPUT PRESSURE:**

0 to 300 psig

**FEATURES:**

- Single Adjustment
- Non-bleed Construction
- Remote Installation
- Compact Design

-  Diaphragm Assembly
-  Input Pressure
-  Output Pressure

**OPERATION:**

The Pilot Spring loads the upper side of the Pilot Diaphragm Assembly and is opposed on the under side by Output Pressure (Blue) acting on the area of the Pilot Diaphragm.

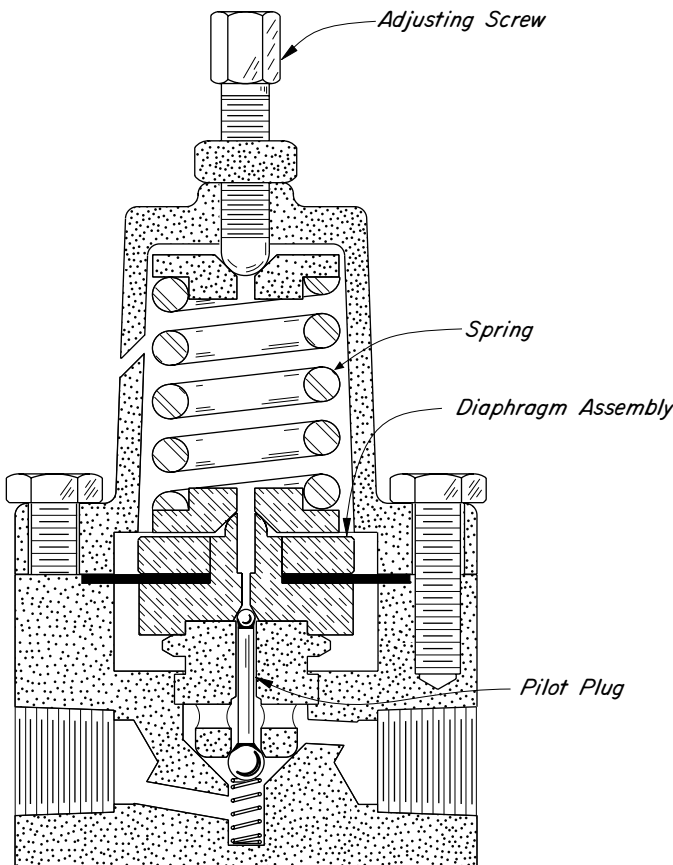
As long as the Input Pressure (Red) is below the setting for the desired maximum Output Pressure (Blue) the Pilot Diaphragm Assembly is held down by the Pilot Spring, and the lower seat of the Pilot Assembly (Red to Blue) is held open, allowing direct communication of input Pressure (Red) to Output Pressure (Blue).

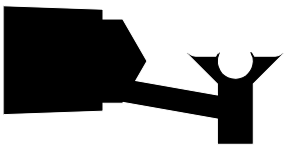
Changes in the Input Pressure (Red) will directly result in changes in the Output Pressure (Blue) unless the pressure reaches the upper limit established by the setting of the Pilot Spring. At this point the Pilot Diaphragm Assembly is forced upward to the point the lower seat for the Pilot Plug (Red to Blue) is closed, preventing any further increases in Output Pressure (Blue).

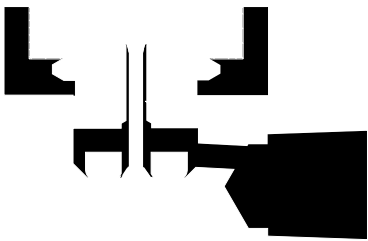
If for any reason conditions would cause the Output pressure (Blue) to start to increase above the desired set point, the Pilot Diaphragm Assembly will move upward, opening the upper Pilot Plug Seat (Blue to Atmosphere) and relieving enough pressure to restore Output Pressure (Blue) to the set point.

When the Input Pressure (Red) returns to a level below the set point limit, the Pilot Plug will drop slightly allowing Input Pressure (Red) to again communicate with Output Pressure (Blue).

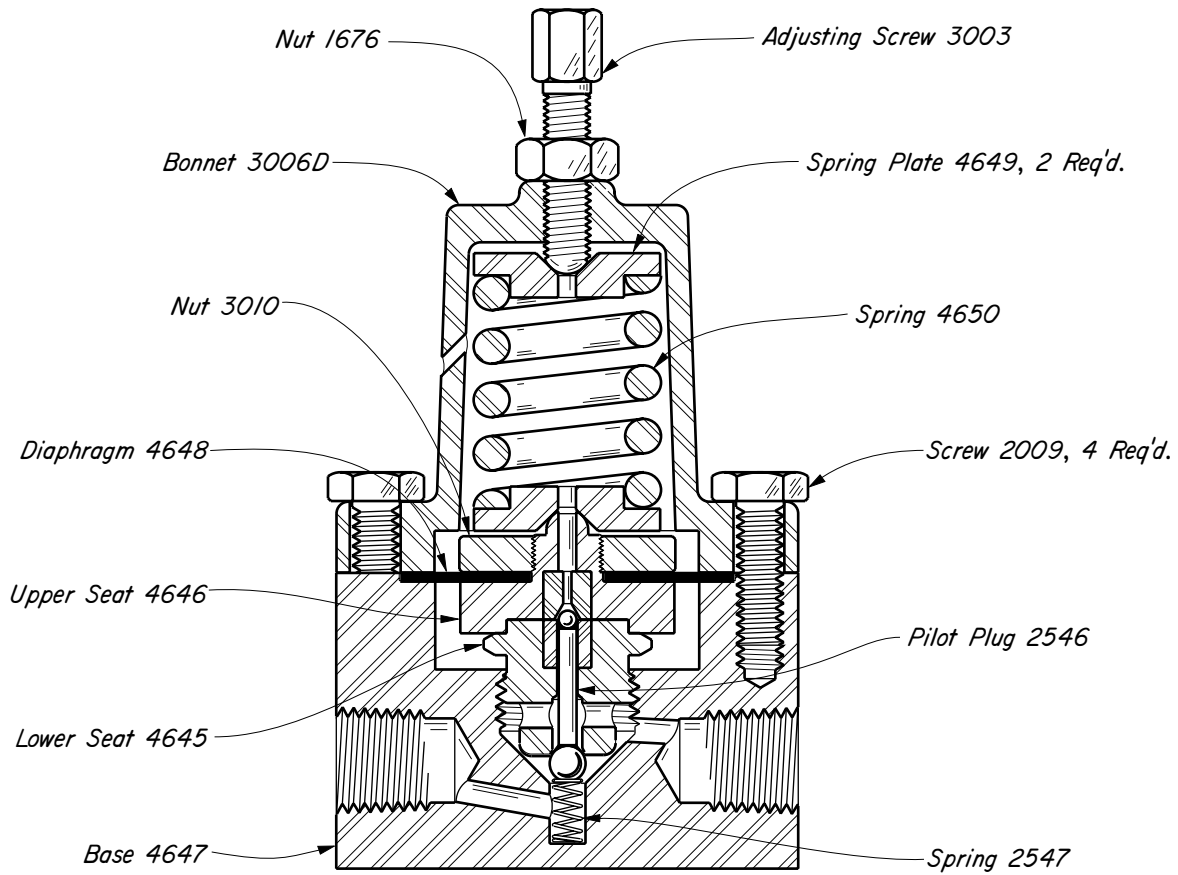
The upper limit for the Output Pressure (Blue) is set with the adjusting screw. Turning the Adjusting Screw clockwise will increase the Output Pressure (Blue) limit, turning the Adjusting Screw counter clockwise will lower the Output Pressure (Blue) limit. The maximum output pressure is 300 psig.



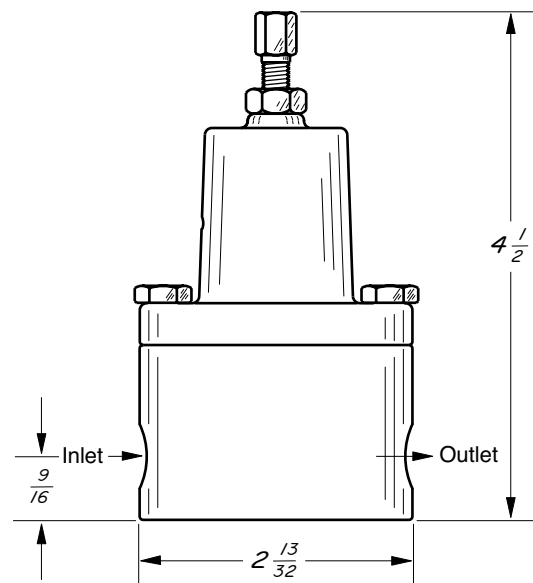




30 PR  
STEEL  
300 lbs. W.P.



**PILOT DIMENSIONS**



**PILOTS AVAILABLE: STEEL**

CAT. NO.	PILOTS	MATERIAL	DES. PRESS.	OPER. PRESS.
YDM	30 PR	STEEL	1000	1000