

APPLICATIONS:

The 30 HPG Pressure Switch sends a pneumatic signal when the monitored pressure rises above the desired pressure. The signal vents when the monitored pressure drops below the desired set pressure. The output signal is an on/off signal and is not intended for use as a proportional signal for throttling a motor valve.

The pneumatic source is isolated from the monitored pressure by a vent chamber which allows the monitored pressure to vent away if it reaches a high enough pressure to cause diaphragm failure.

FEATURES:





- Single adjustment
- Filtered gas supply
- Accurate control
- Non-bleed
- Remote installation
- Direct, on/off action

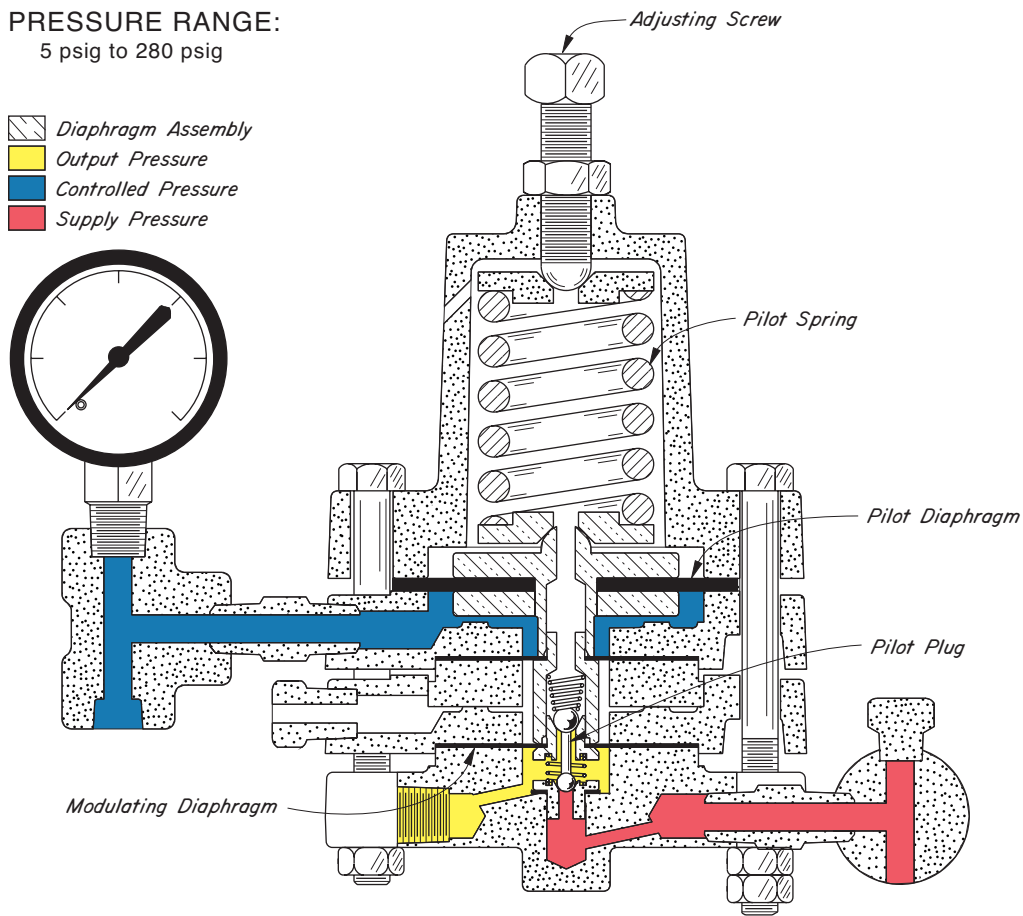
SUPPLY PRESSURE:

30 psig

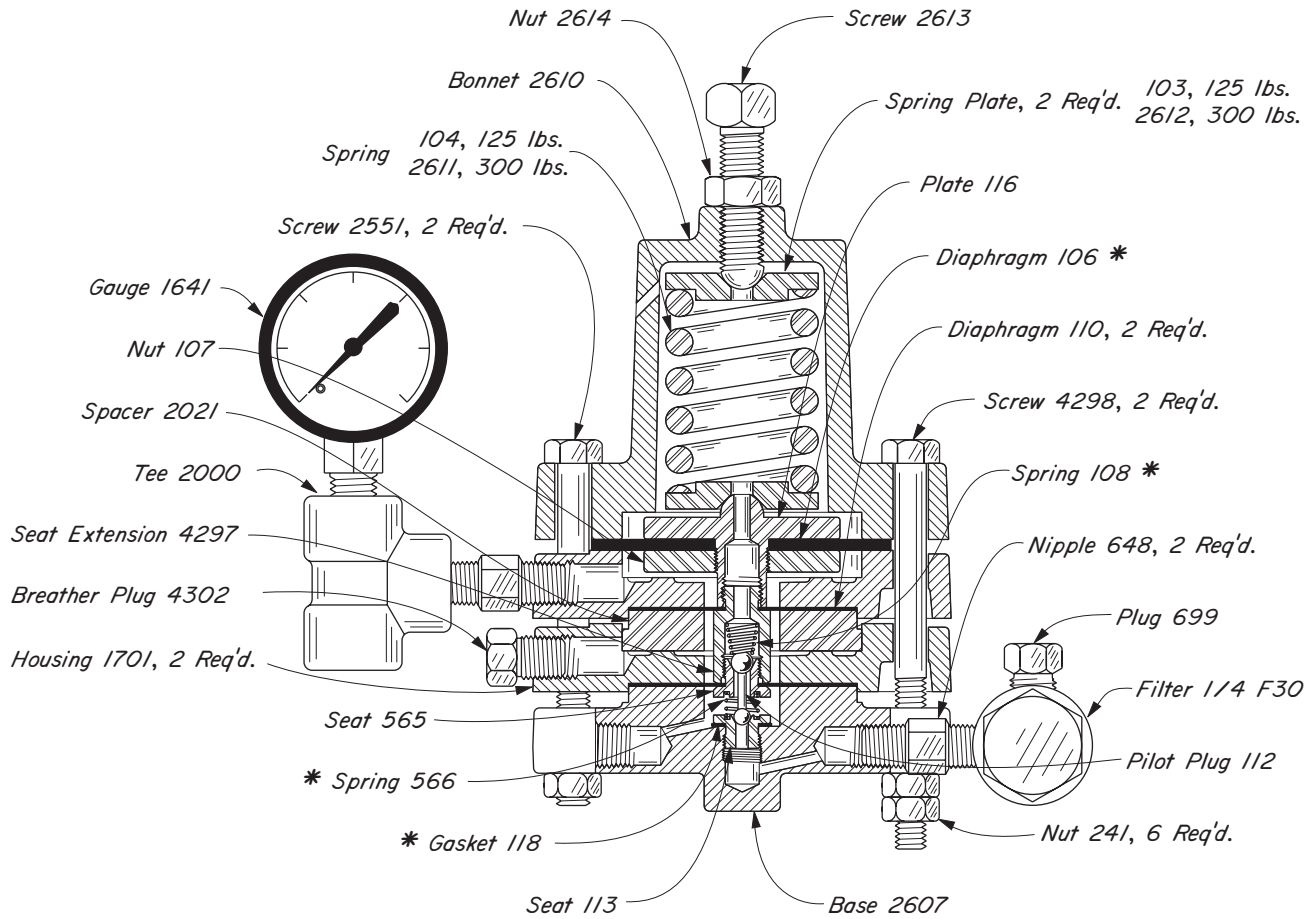
PRESSURE RANGE:

5 psig to 280 psig

-  Diaphragm Assembly
-  Output Pressure
-  Controlled Pressure
-  Supply Pressure



30 HPG PRESSURE SWITCH
 DUCTILE
 300 lbs. W.P.



PILOTS AVAILABLE: DUCTILE

CAT. NO.	PILOT	DES. PRESS.	OPER. PRESS.
AHJ3	30 HPG DIR. ^w /125 lb. SPRG.	300	125
AHJ4	30 HPG DIR. ^w /300 lb. SPRG.	300	285

All openings are tapped 1/4" NPT.

*These are recommended spare parts and are stocked as repair kits. To order repair kit, specify: "30 PG PRB-D Repair Kit, RSR"