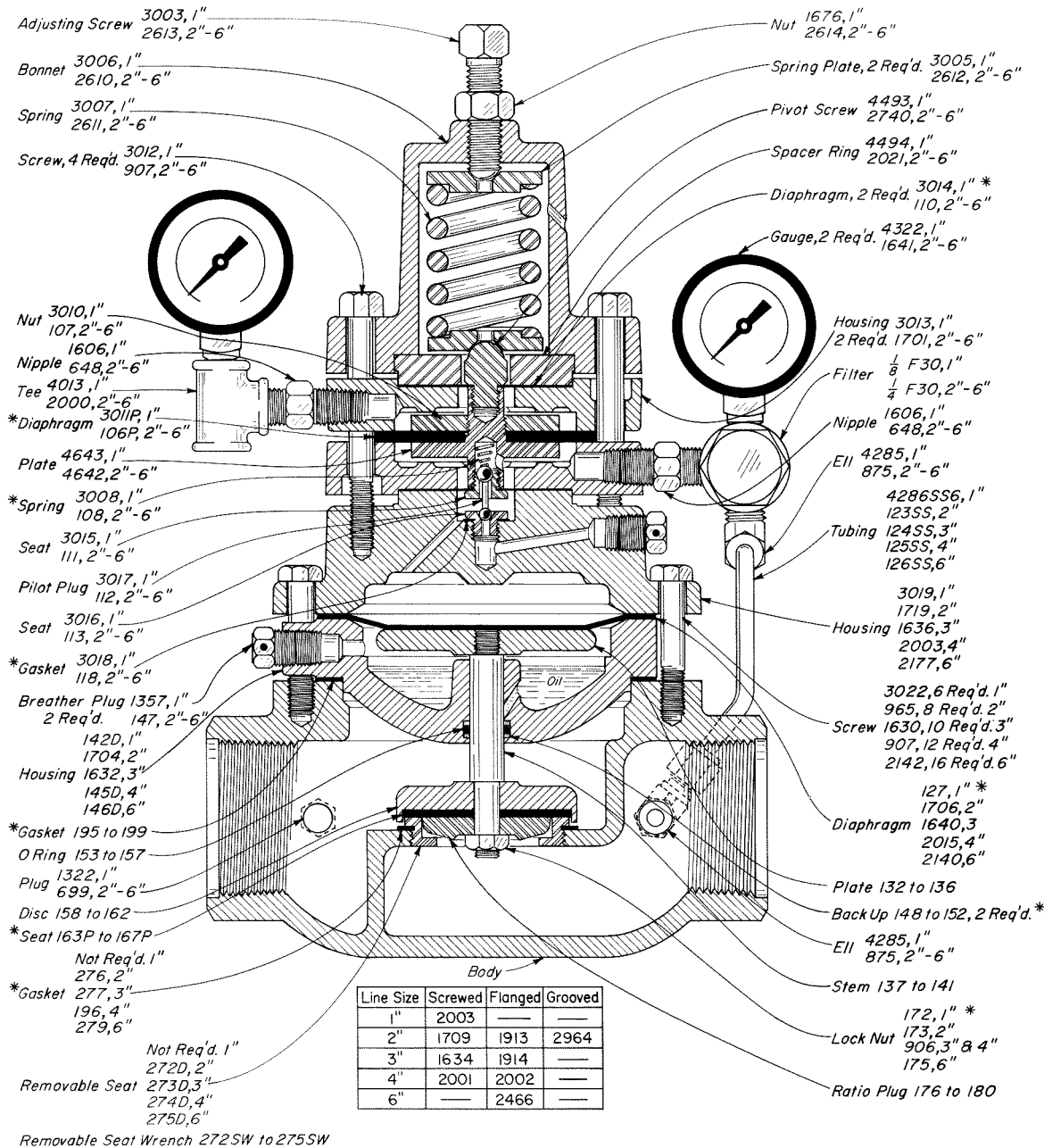


1", 2", 3", 4" & 6" S/F/GGT WDP-D

DUCTILE

220-300 lbs. W.P.



VALVES AVAILABLE: DUCTILE IRON

CAT. NO.	SIZE	TYPE	REG. NO	DES. PRESS.	OPER. PRESS.
ANA	1"	SCRD.	130 SGT	WDP-D	300 300
ANB	2"	SCRD.	230 SGT	WDP-D	300 300
ANC	2"	FLGD. <sup>a</sup>	218 FGT	WDP-D	220 220
AND	2"	GRVD.	230 GGT	WDP-D	300 300
ANE	3"	SCRD.	330 SGT	WDP-D	300 300
ANF	3"	FLGD. <sup>a</sup>	318 FGT	WDP-D	220 220
ANG	4"	SCRD.	430 SGT	WDP-D	300 300
ANH	4"	FLGD. <sup>a</sup>	418 FGT	WDP-D	220 220
ANI	6"	FLGD. <sup>a</sup>	618 FGT	WDP-D	220 220

\*These are recommended spare parts and are stocked as repair kits. To order repair kit, specify size of regulator: For example: "2" WDP Repair Kit"

NOTE: The numbers of a series assigned to a part indicate different line sizes. For example: Seat 164P-1", 165P-2", 166P-4", 167P-6".

<sup>a</sup>Companion flanges, nuts, bolts and gaskets are furnished at extra cost. Refer to Section "Y" for ordering.